



science & innovation

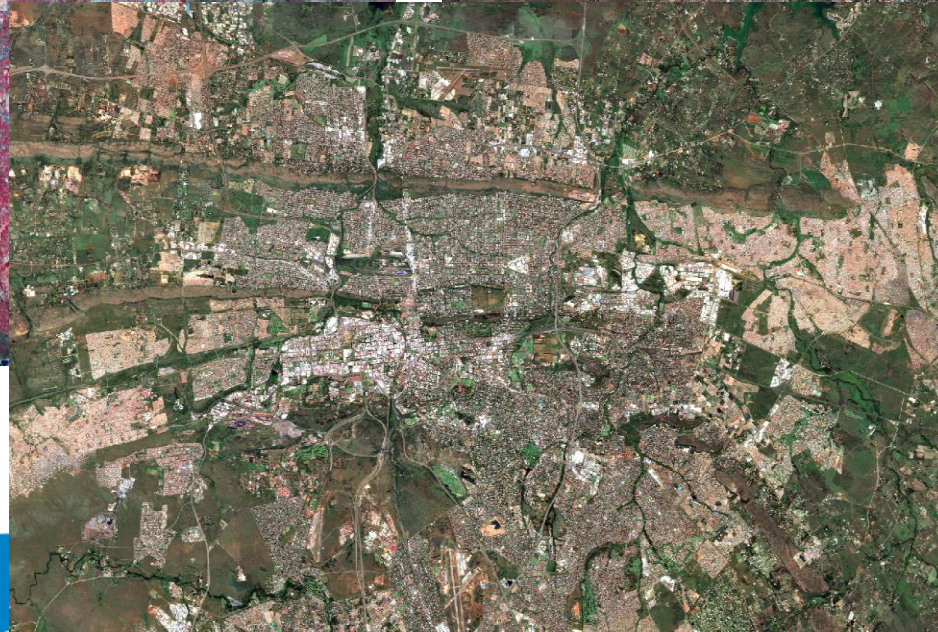
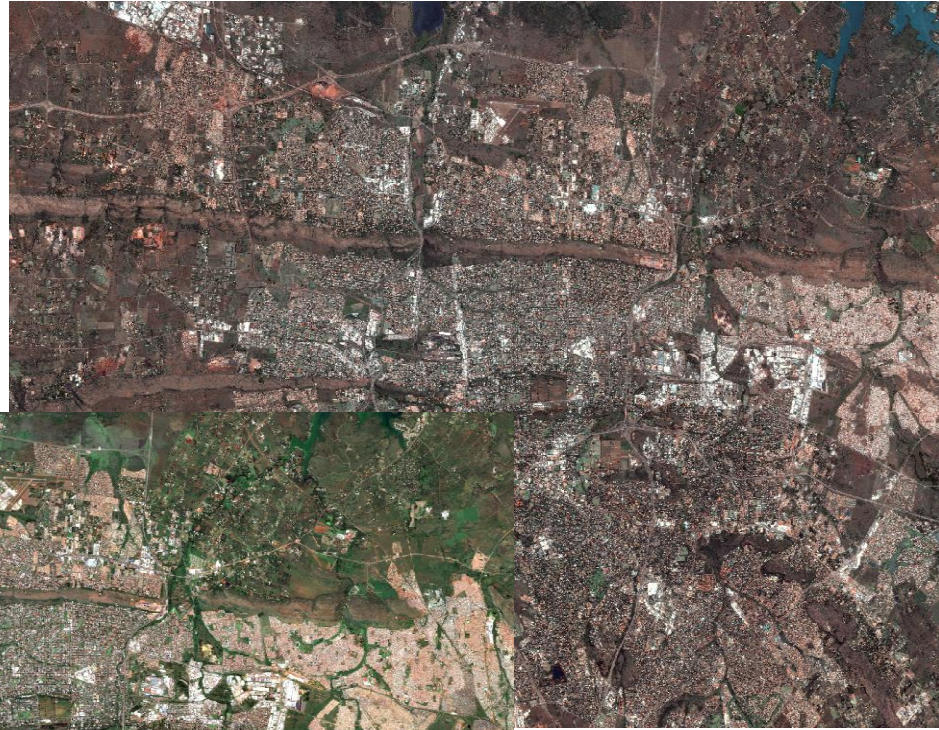
Department:
Science and Innovation
REPUBLIC OF SOUTH AFRICA

Assessing human settlements growth patterns in South Africa

Naledzani Mudau
Space for National Development Week 2019
Protea Hotel Fire & Ice! Pretoria Menlyn
12-14 November 2019

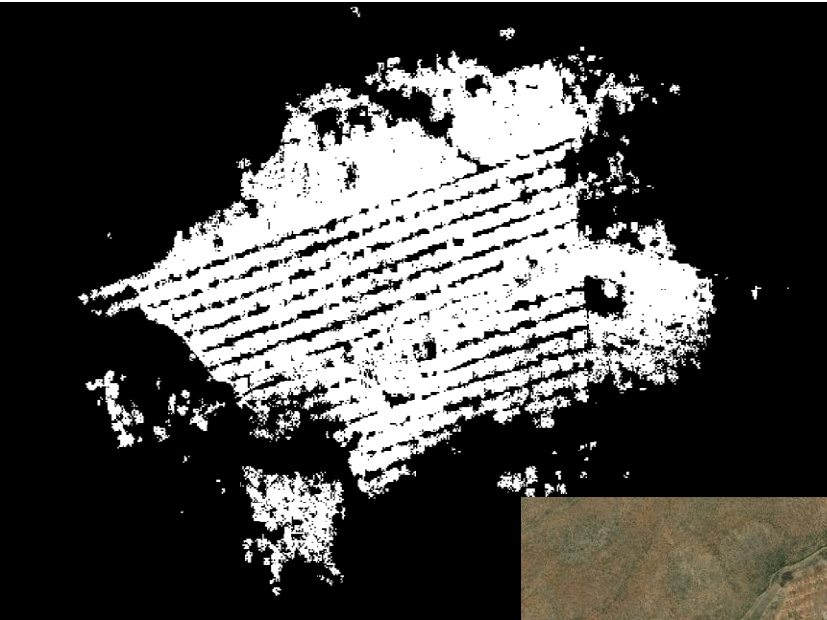


HIGH AND MEDIUM SPATIAL RESOLUTION IMAGERY FOR HUMAN SETTLEMENTS MAPPING AND MONITORING

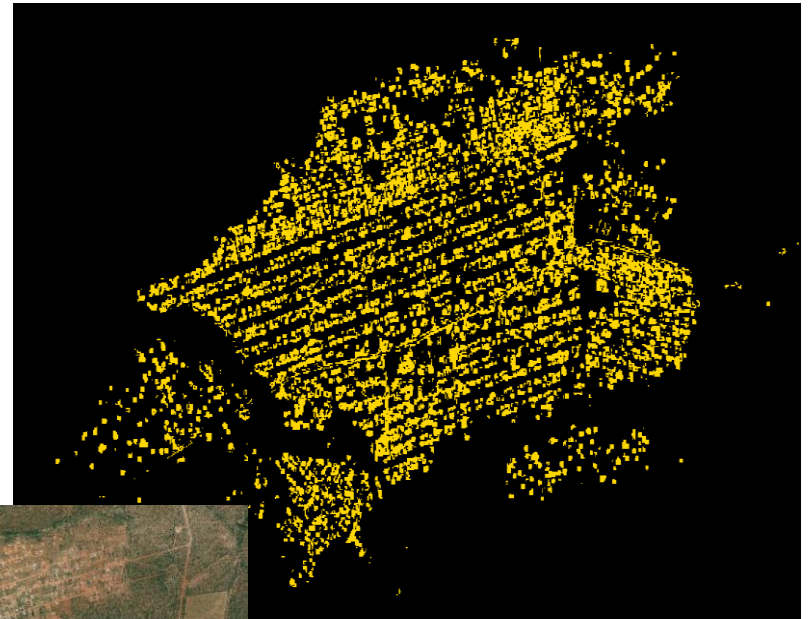


HUMAN SETTLEMENT MAPPING AND MONITORING

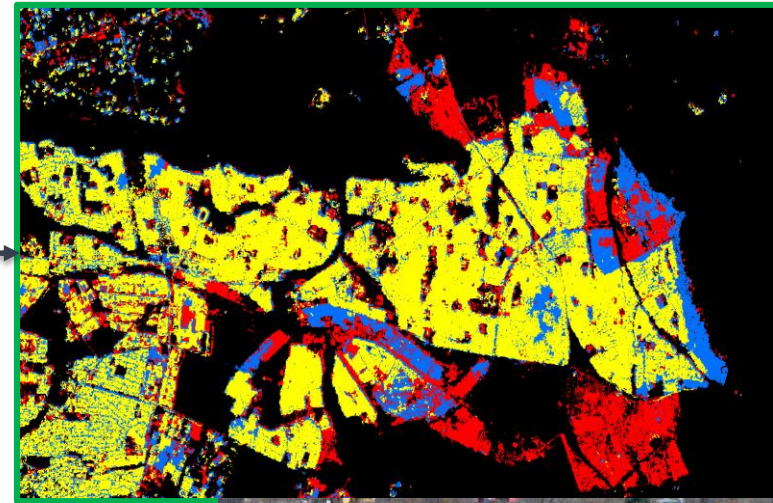
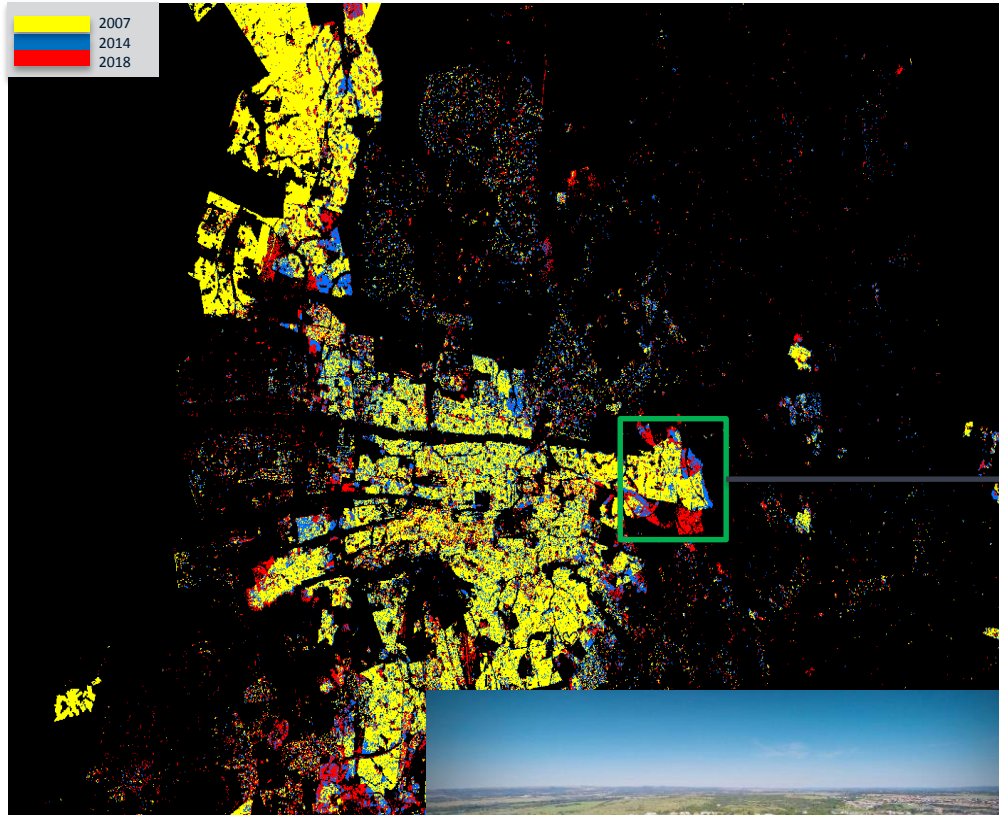
SPOT



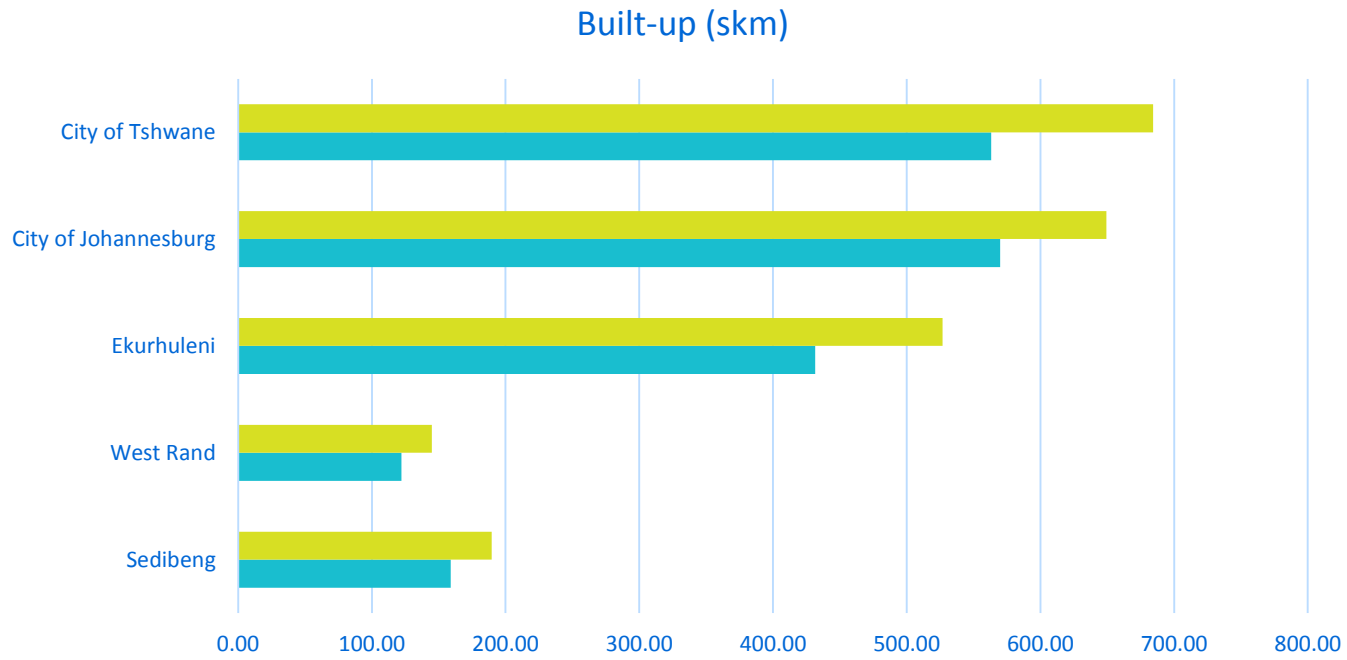
SENTINEL 2B; 2018



URBAN GROWTH ASSESSMENT USING SPOT & SENTINEL

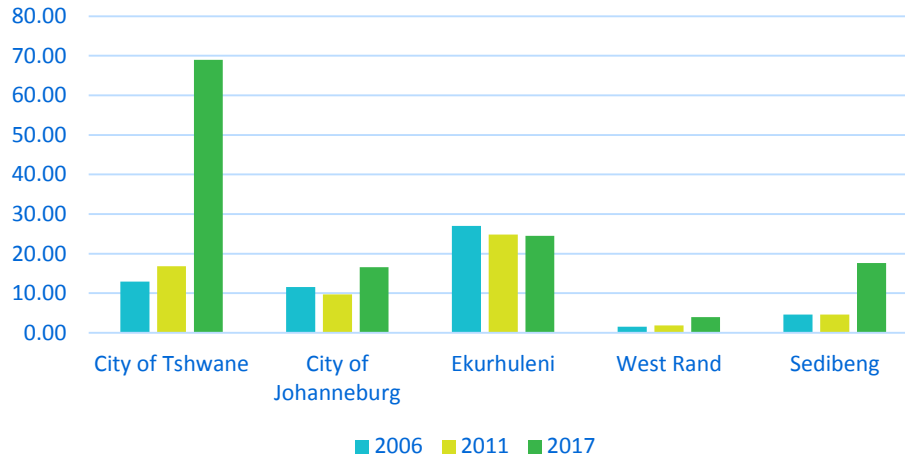


Gauteng Urban Growth Assessment



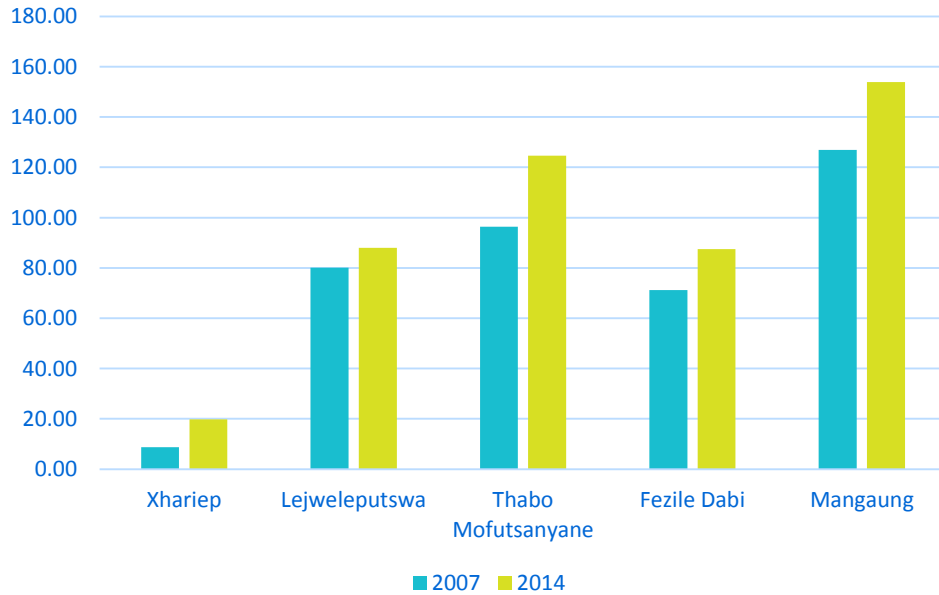
Gauteng Informal settlement Growth Assessment

Informal Settlement

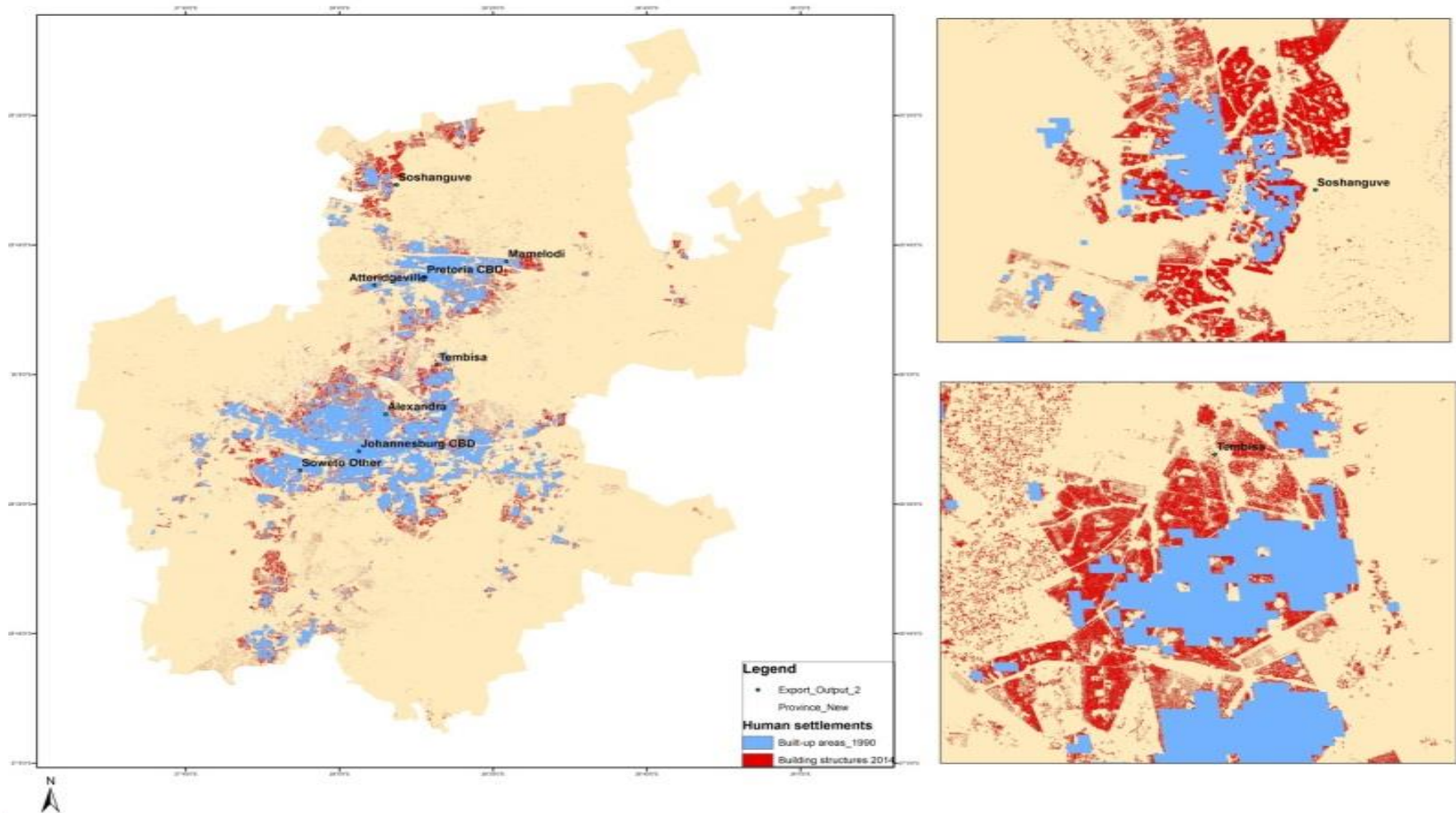


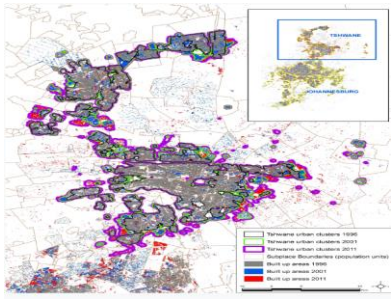
Free State Settlement Growth

Settlement Growth



URBAN GROWTH ASSESSMENT





stats sa
 Department:
 Statistics South Africa
 REPUBLIC OF SOUTH AFRICA



human settlements
 Department:
 Human Settlements
 REPUBLIC OF SOUTH AFRICA

UN HABITAT
 FOR A BETTER URBAN FUTURE

Measuring Land Use efficiency SDG indicator 11.3.1

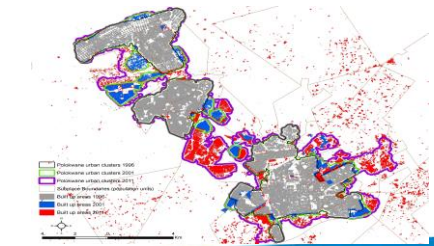
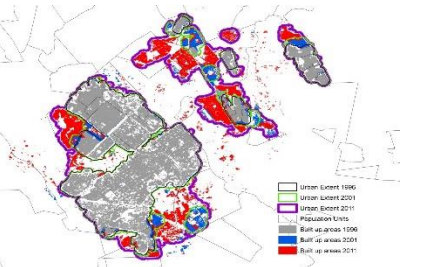
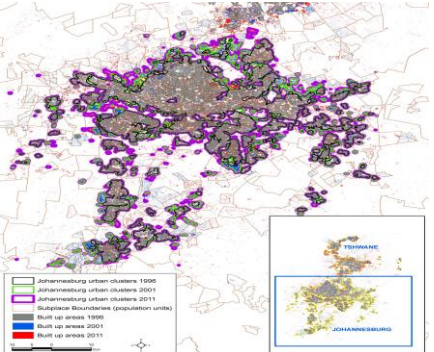
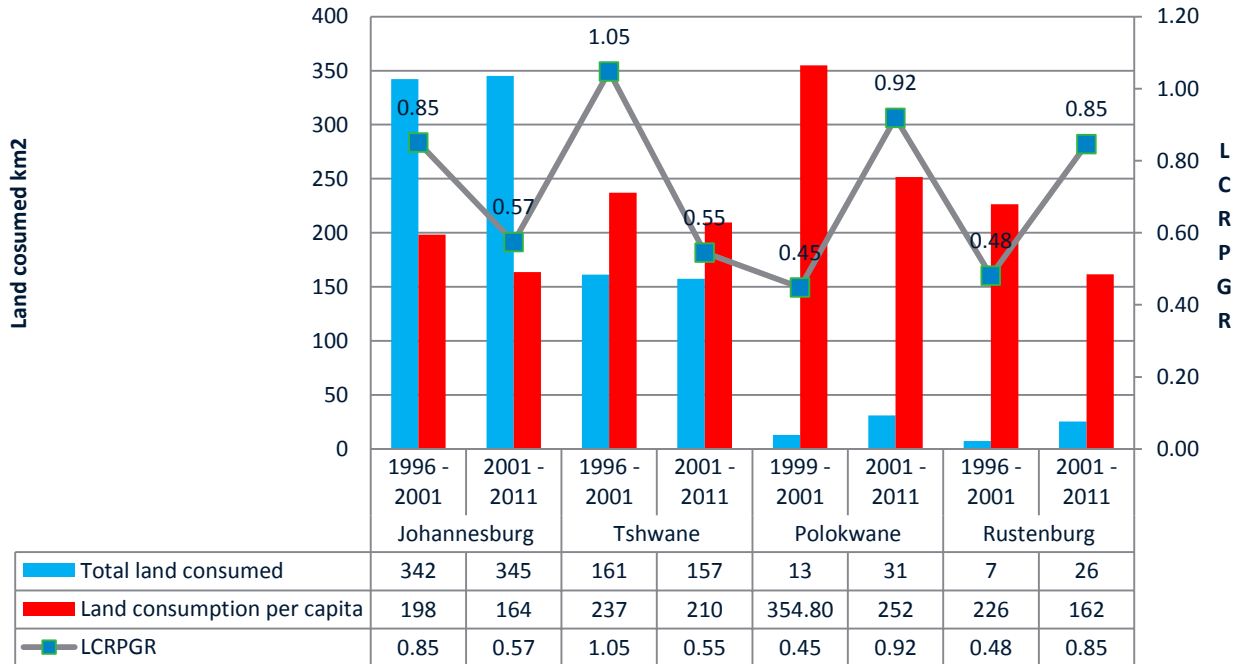


Chart Title



Land consumed km2

LCRPR

Current Center Create Feature Modify Feature Deselect Feature Map Extent Help ?

Layers Information / Download

- Base Maps
- Vegetation Analyses
- Flood Risk Analyses
- Informal Settlement
- 2006
- 2011
- Human Settlement
 - 2007
 - Classified 2012
 - 2012
 - 2014
 - 2018r
 - Human Settlements At Risk Of Floods
- Water Distribution
- Administrative Boundaries
- Other Data
- Vector Data

5 km
2 mi

No Coordinates - Beyond Map Extent

1 : 175264 4:56:33 PM

<http://products.sansa.org.za/mapApp/index.html>



science & innovation

Department:
Science and Innovation
REPUBLIC OF SOUTH AFRICA

Ndi a livhuwa

Thank you

NMudau@sansa.org.za